

INSTALLATION INSTRUCTIONS

PHANTOM BAR END MIRRORS, GLOSS BLACK

1959

THANK YOU FOR CHOOSING KURYAKYN!

Protect yourself and others from possible injury and property damage or loss. Pay close attention to all instructions, warnings, cautions, and notices regarding the installation, use, and care of this product.

WARNING THIS INDICATION ALERTS YOU TO THE FACT THAT IGNORING THE CONTENTS DESCRIBED HEREIN CAN RESULT IN POTENTIAL DEATH OR SERIOUS INJURY.

CAUTION THIS INDICATION ALERTS YOU TO THE FACT THAT IGNORING THE CONTENTS DESCRIBED HEREIN CAN RESULT IN MINOR OR MODERATE POTENTIAL INJURY.

NOTICE THIS INDICATION ALERTS YOU TO THE FACT THAT IGNORING THE CONTENTS DESCRIBED HEREIN MAY NEGATIVELY AFFECT PRODUCT PERFORMANCE AND FUNCTIONALITY OR DAMAGE THE PRODUCT ITSELF OR THE PRODUCT TO WHICH IT IS BEING ATTACHED.

ENSURE THAT THE FOLLOWING PARTS HAVE BEEN INCLUDED IN THE KIT:

- | | | | |
|---|------------------------------------|---|----------------------------|
| 1 | Left Mirror Assembly | 1 | Hardware Kit - CONTINUED - |
| 1 | Right Mirror Assembly | 2 | Anti-Friction Disk, Nylon |
| 1 | Hardware Kit, containing: | 6 | Wedge |
| 2 | M6x1.0x65mm Socket Head Cap Screws | 2 | Threaded Wedge |
| 2 | Sliding Wedge | 2 | O-Ring |

YOU WILL ALSO NEED:

Metric hex wrench set, combination wrench set, razor blade, 7/8" (or larger) drill bit

PICTURES SHOWN ARE OF THE CHROME PARTS. INSTALLATION OF THE BLACK PARTS WILL BE THE SAME.

NOTICE THESE INSTALLATION INSTRUCTIONS CONTAIN IMPORTANT INFORMATION. ENSURE THE END USER RECEIVES THIS COPY AND IS AWARE OF ITS IMPORTANCE FOR FUTURE USE.

STEP 1 Read and understand all steps in the instructions before starting the installation. Park the motorcycle on a hard, level surface and turn off the ignition. Let motorcycle cool.

Note: Proper installation may require cutting or drilling a 5/8" hole in the end of the OEM grips. Proper installation requires 7/8" or 1" handlebars that have open ends.

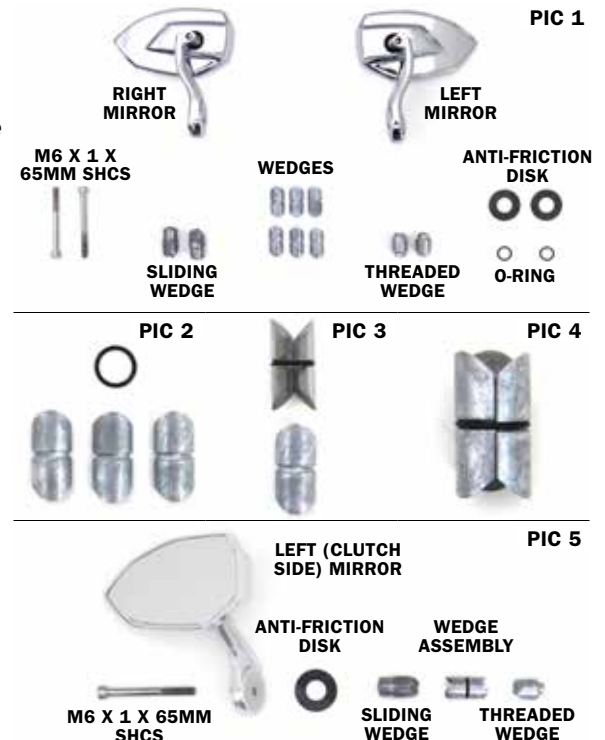
STEP 2 Grip style will vary. Prepare your grips and handlebars accordingly. Either remove existing end cap covers from each end, or remove bar ends and cut or drill a 7/8" hole in the end of the grips. Hole size can be larger, if necessary.

STEP 3 Refer to PIC 2. Locate provided three (3) Wedges and an O-ring.

STEP 4 Refer to PIC 3. Place two (2) of the wedges together and wrap the O-ring around the outside of the wedges. Be sure the o-ring is set within the horizontal center line groove of the wedge.

STEP 5 Refer to PIC 4. Carefully slide and align the third wedge under the o-ring, to fully secure the three (3) wedges together.

STEP 6 Refer to PIC 5. Locate provided one (1) mirror, one (1) M6 Screw, one (1) Anti-Friction Disk, one (1) Sliding Wedge, one (1) Threaded Wedge, and one (1) wedges and o-ring assembly.



INSTALLATION INSTRUCTIONS

PHANTOM BAR END MIRRORS, GLOSS BLACK

1959

-CONTINUED-

- STEP 7** Refer to PIC 6. Insert the screw through the mirror's mounting hole. Place the anti-friction disc on the screw, followed by the sliding wedge, the wedge and o-ring assembly, and the threaded wedge. Lightly tighten the threaded wedge until all wedge pieces are touching.

Note: If the threaded wedge is tightened any further it will cause the wedge and o-ring assembly to expand, which could cause difficulty for installation to the grip.

- STEP 8** Refer to PIC 7. Align and place the mirror assembly into the end of the grip.

- STEP 9** Tighten the screw at the end of the Bar End Mirror mount until it does not spin in the end of the grip. Be careful not to over tighten.

- STEP 10** Adjust the mirror for proper view before riding the motorcycle.

CAUTION ROTATE THE HANDLEBARS LOCK TO LOCK TO ENSURE THERE IS NO CONTACT BETWEEN THE BAR END MIRROR MOUNT AND ANY COMPONENT ON THE MOTORCYCLE OR THE OPERATOR.

CAUTION ENSURE THAT THE INSTALLATION OF THIS PRODUCT DOES NOT INTERFERE WITH THE PROPER OPERATION OF THE MOTORCYCLE BEFORE RIDING.

- STEP 11** Repeat Step 2 through 10 on the opposite side.

NOTICE IT IS THE INSTALLER'S RESPONSIBILITY TO ENSURE THAT ALL OF THE FASTENERS (INCLUDING PRE-ASSEMBLED) ARE TIGHTENED BEFORE OPERATION OF THE MOTORCYCLE. KURYAKYN WILL NOT PROVIDE WARRANTY COVERAGE ON PRODUCTS OR COMPONENTS LOST DUE TO IMPROPER INSTALLATION OR LACK OF MAINTENANCE. PERIODIC INSPECTION AND MAINTENANCE ARE REQUIRED ON ALL FASTENERS.

PIC 6



PIC 7

LEFT (CLUTCH SIDE) VIEW



FINAL



INSTALLATION INSTRUCTIONS

PHANTOM BAR END MIRRORS, GLOSS BLACK

1959

-CONTINUED-

LIMITED WARRANTY

Kuryakyn warrants that any Kuryakyn products sold hereunder, shall be free of defects in materials & workmanship for a period of one (1) year from the date of purchase by the consumer excepting the following provisions:

1. Kuryakyn shall have no obligation in the event the customer is unable to provide a receipt showing the date the customer purchased the product(s).
2. The product must be properly installed, maintained & operated under normal conditions.
3. Kuryakyn shall not be liable for any consequential & incidental damages, including labor & paint, resulting from failure of a Kuryakyn product, failure to deliver, delay in delivery, delivery in nonconforming condition, or for any breach of contract or duty between Kuryakyn & a customer.
4. Kuryakyn products are often intended for use in specific applications. Kuryakyn makes no warranty if a Kuryakyn product is used in applications other than intended.
5. Kuryakyn electrical products are warranted for one (1) year from the date of purchase by the consumer. L.E.D.'s contained in components of Kuryakyn products will be warranted for defects in materials & workmanship for 3 years from the date of purchase whereas all other components shall be warranted for one (1) year.
6. All warranty claims must be directed to the place of purchase. Merchandise sold through internet auction sites or any other unauthorized reseller shall not carry a Kuryakyn warranty. If unsure, please contact the place of purchase to verify they are an authorized Kuryakyn reseller.

RETURN POLICY

Merchandise determined to be defective may be returned up to one year from the date of purchase. Returns must be processed through original seller. Returned merchandise for any other reason other than warranty claims must be in like new condition & subject to a 20% restocking fee. All returns are subject to inspection for determination of full or partial credit. Any returned part that shows evidence of being used or installed contrary to manufacturer's instructions, &/or subjected to improper handling, packaging or return shipping by the customer, will not be eligible for exchange, refund or warranty consideration. All returned electrical items will be inspected & tested. If electrical item is deemed functional, no credit will be issued & item will be returned. All sales are final on discontinued or closeout merchandise.

©2015 KURYAKYN HOLDINGS, LLC ALL RIGHTS RESERVED

KURYAKYN, KURYAKYN K logo and the marks appearing on this instruction sheet are registered and common law trademarks of Kuryakyn Holdings except noted third-party trademarks. A full listing of trademarks and trademark registrations owned by Kuryakyn Holdings can be found at www.kuryakyn.com/legal-notice.

Emissions Notice: The California Air Resources Board (CARB) does not permit the use of aftermarket emission-related parts(s) that alter the performance of OEM emission-related devices unless CARB has issued an Executive Order, other than on racing vehicles on closed courses. Check your local laws and manufacturer's information.

Listed Manufacturers and product model names are for reference only. All product and company names are trademarks or registered trademarks of their respective holders. Use of them does not imply any affiliation with or endorsement by them. All specifications are subject to change without notice.

For additional information on third-party product and company names, please consult our Web page at www.kuryakyn.com/legal-notice