

POD-300

DIGITAL DISPLAY

Installation Instructions



Parts List

- 1 POD-300 Module
- 1 USB Cable
- 1 CAN cable
- 1 Installation Guide
- 2 Dynojet Decals
- 2 Velcro
- 1 Alcohol swab

DO NOT OPERATE DEVICE WHILE DRIVING. PERFORM ALL ADJUSTMENTS OR CHANGES WHILE VEHICLE IS STOPPED. CHANGING A SETTING WHILE UNDER WAY CAN INTERFERE WITH YOUR ATTENTION TO THE ROADWAY

PLEASE READ ALL DIRECTIONS BEFORE STARTING INSTALLATION



2191 Mendenhall Drive North Las Vegas, NV 89081 (800) 992-4993 www.powercommander.com

Optional mount shown - part #61300062



INSTALLING THE MODULE

- The unit can be secured as needed to the vehicle using the supplied velcro or suitable mount. Make sure the unit will not interfere with the operation and/or steering of the vehicle.
- The mounting holes on the back of the module use the standard AMP style pattern.
- Connect the supplied cable into the port on the side of the module and run the other end of the cable to an open CAN port of the PCV network.
 - This can connect to the PCV, Ignition Module or SFM. Whichever has an open CAN port. If your network currently has a CAN termination plug occupying the open port then you can remove the CAN termination plug. It will no longer be necessary.



MAIN MENU

GAUGE VIEW

GAUGE VIEW - Setup your channels to display

CONFIGURE ALARMS - Setup the 3 lights to illuminate based on channels from PCV/WB2

DATA LOGGING - log selected channels and view them later in .csv format

DEVICE SETUP - Setup PCV fuel trims and WB2 device settings.

USB MODE - download your saved logs

DISPLAY SETTINGS - Adjust BRIGHTNESS, CONTRAST, MODE of module. MODE lets you invert the screen if necessary.

ABOUT - Detailed information about the module

You can view up to 4 channels at a time. From the main menu go to GAUGE VIEW. Choose which screen you want to use. There are 4 preset template screens.

Click on Display Value A - this will be the channel in upper left corner of SCREEN 1. Choose what channel you want this to be:

INTERNAL channels are from the module (time, CPU usage).
PCV channels are from the PCV network. What modules and/or features you have enabled will dictate what channels you can view.

WB2 channels are from a WB2 or Autotune. If you are trying to view AFR and you have an Autotune this is where you would get that channel. On a dual channel Autotune you would get the AFR channels under the PCV list. If you have a single channel Autotune or WB2 you would get this channel from the WB2 list.

Repeat this for the other 3 channels if desired.

CONFIGURE ALARMS

Alarms can be setup based on 1-3 channels and triggered by less than or greater than.

1 channel alarm example:

RED light is triggered when ENGINE RPM is greater than 10000rpm

2 channel alarm example:

YELLOW light is triggered when AFR is greater than 14.0 AND greater than 60% throttle

3 channel alarm example:

GREEN light is triggered when AFR is greater than 12.8 AND less than 13.8 AND greater than 10% throttle

DATA LOGGING

ADD CHANNEL - You must first pick what channels you want to log. You can choose from the PCV network or WB2. When you first enter your selection you will see the full list of channels available for logging. As you choose which one you want this channel will drop off the list

VIEW/REMOVE CHANNEL - This removes the channels from the list you want to log and puts them back into the main ADD CHANNEL list.

DELETE LOGS - Remove stored logs from the unit.

The unit has 4 slots of internal memory that you can log to. Once the slot is full logging will automatically stop. If a slot is full it will automatically start logging to a new slot on the next initialization. If you START/STOP a log and the slot is not full on your next log initialization it will write to a new slot also.

SAMPLING RATE - Choose the sampling rate in which you want the data to be exported at.

PCV FUEL TRIMS

LOW - Adjust the first third of your RPM range. Use the + / - symbols to increase/decrease the fuel of this range by up 20%

MID - Adjust the second third of your RPM range. Use the + / - symbols to increase/decrease the fuel of this range by up 20%

HIGH - Adjust the last third of your RPM range. Use the + / - symbols to increase/decrease the fuel of this range by up 20%

Example: If your engines RPM range is 12000rpm
LOW=0-4000 MID=4001-8000 HIGH=8001-12000

These ranges can be adjusted in Control Center Software of Power Core software if desired.

WB2 SETUP

WB2 LAMBDA SETUP

O2 Out Threshold - .9 -1.1, default value = 1 - Sets up the Narrowband O2 Out function on the Wideband 2 (green wire). Changing this value will change the AFR that WB2 switches the narrowband signal around. For example, if using a value of .95, the WB2 will emulate a narrowband voltage signal that switches to rich if the Lambda reading is lower than .95, and lean if the Lambda reading is higher than .95

Lambda Smoothing - smooths, or averages, the AFR and Lambda channels. Lower values will result in the highest resolution, minimal latency, and would be preferred in situation where you are datalogging.

Stoich Value - Predetermined stoichiometric values for different fuels.

WB2 RPM SETUP

RPM Multiplier - adjusts the RPM multiplier used for the RPM input on the WB2. In order to acquire an accurate tach signal reading, you will need to adjust this setting for your application. This setting is for WB2 only.

Tach Smoothing - smooths the RPM input signal of the WB2. This setting is useful to stabilize, or dampen the RPM signal displayed on the WB2.

Tach Signal filter - filters out invalid RPM signal inputs. This setting can be adjusted if you notice the tach reading displayed on the WB2 is unstable, spiking, or otherwise inconsistent.

The following settings are useful for vehicles that have a CDI (capacitive discharge ignitions) system.

Attenuate Signal - (setting is either active or inactive) Makes the RPM input signal smaller (less voltage) to filter out noise. This setting is for WB2 only.

Bias Signal - will bias the entire RPM signal input to a higher voltage. The ability to activate this feature only appears when "Attenuate Tach Signal" is selected.

Rising Edge - allows the WB2 to measure the rising edge on the RPM voltage signal.

WB2 ANALOG INPUTS

Allows you to name and configure the 0-5v analog input of the WB2. Measure your low and high voltages of this signal and input them accordingly.

USB MODE

Allows the module to be put into PC link mode while the unit is connected to a running vehicle. This allows you to pull the logs while vehicle is running.

ABOUT

Displays serial # and firmware version loaded into the module

Check www.powercommander.com download section

EXPORTING and VIEWING LOG FILES

Download Power Core software by going to www.dynojet.com and click on Downloads and go to Software. This will download the complete Power Core Suite. This module will use the POD-300 and WinPep 8 Data Center programs.

Once you open the POD-300 program it will automatically retrieve any logs stored in the module. Click on the log file you want to export and then click on either:

Export to WinPep8 Data center - Choose output folder location then click Export CSV. Data Center opens for you. Click on the NONE on the X and Y axis of the graph to choose which channels you want to view. Only channels logged will be shown as an option.

Export to CSV file - saves file to destination file to be viewed in Microsoft Excel format.

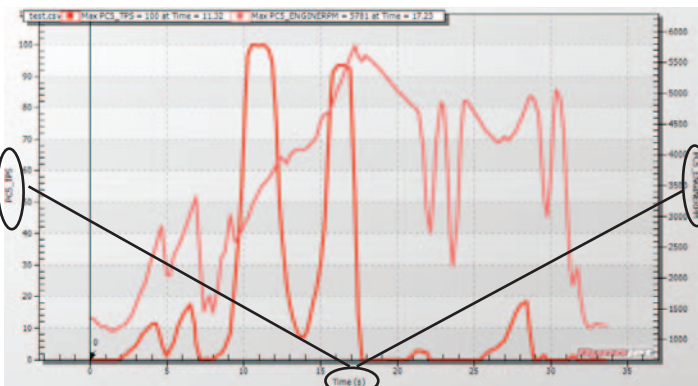
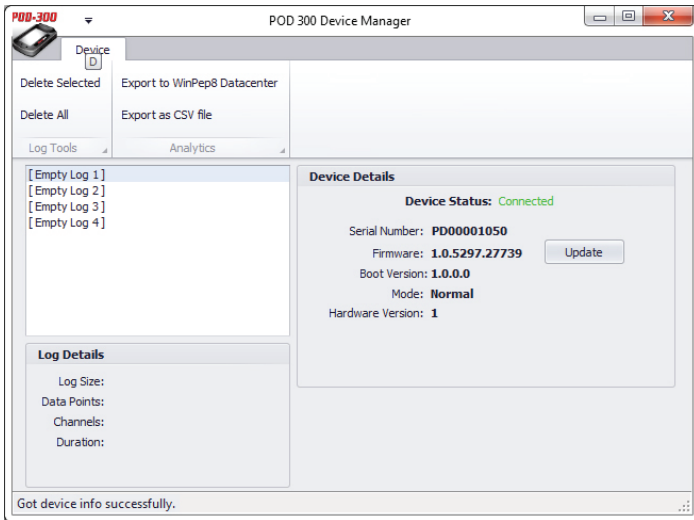
This software also allows you to delete logs from the unit and update the firmware if needed.

DISPLAY SETTINGS

CONTRAST - Adjust the screen contrast 0-100

BRIGHTNESS - Adjust the brightness of the screen 0-100. This will only be visible when unit has power from the vehicle.

MODE - Flip the orientation of the screen



Click here to choose the channels you want to view